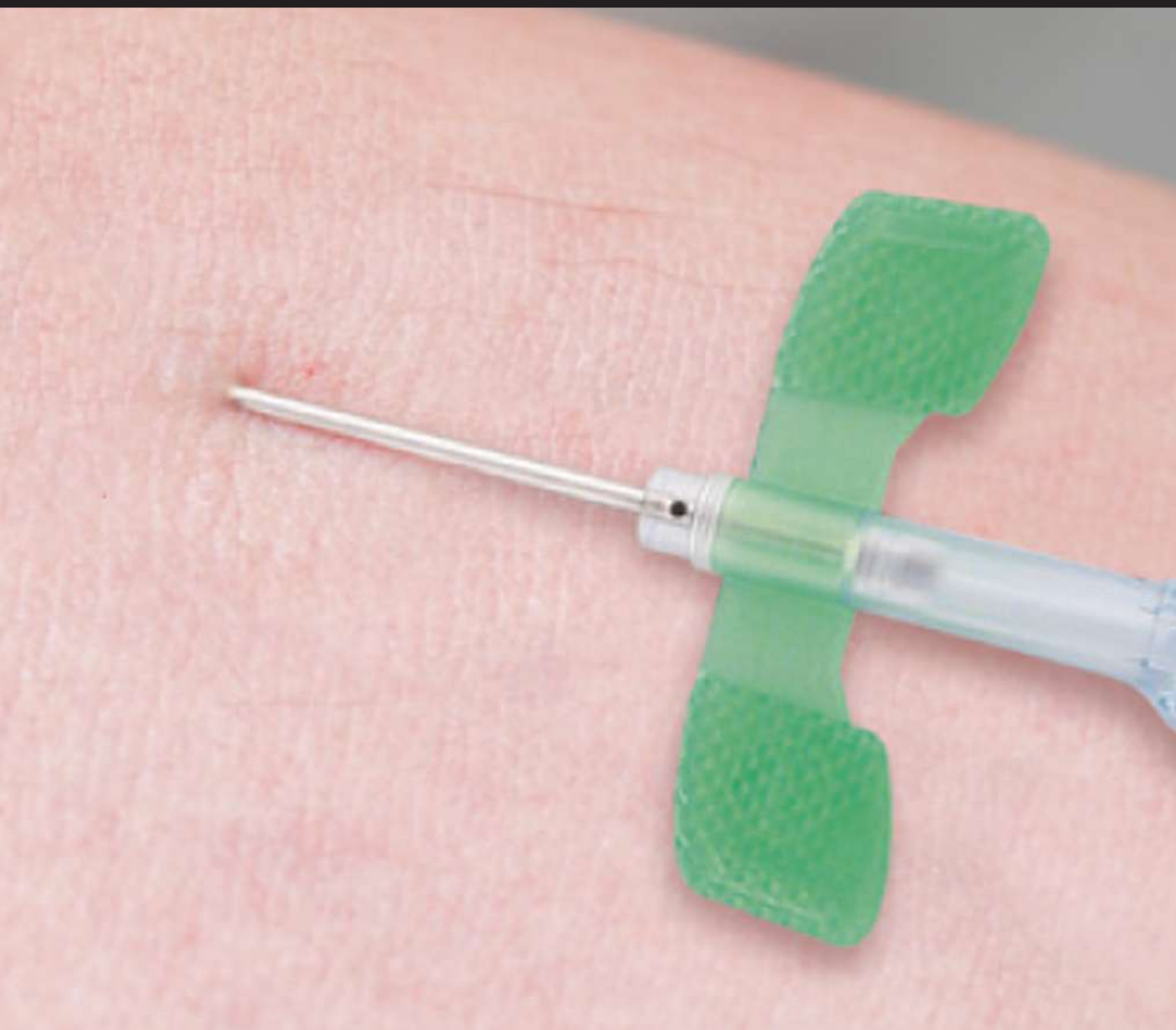


SAFETOUCH™ AVF NEEDLE

FOR A SAFE AND SUCCESSFUL TREATMENT



SAFETOUCH™ AVF NEEDLE FEATURES

- Reduced risk of needle stick injury
- Non-reversible mechanism
- Active safety feature using a one-handed technique
- Secured locking confirmed by an audible and tactile click

SAFETOUCH™ AVF NEEDLE SAFETY MECHANISM

- Hold down the wing protector and/or the wings with one hand
- With the other hand, release the lock by pressing in both sides of the stopper
- Slide the stopper forward until it becomes completely locked with an audible or tactile click

ULTRA SHARP AND SILICONIZED 3-BEVEL NEEDLE

Ensures smooth and optimal puncture and prevents vessel trauma

OVAL-SHAPED BACK-EYE

Optimizes blood flow and minimizes the risk of aspiration to the vessel wall on the arterial needle

BLACK RED DOTS

Indicates the bevel position on the needle with turnable wings

ULTRA-THIN NEEDLE WALL

Guarantees an optimal blood flow

TURNABLE OR FIXED COLOR-CODED WINGS

Facilitates the recognition of gauge size

TEXTURED WINGS

Provides secure grip during needle manipulation

SAFETOUCH SAFETY MECHANISM

Prevents NSI

SOFT FLEXIBLE TUBING

Eases clamping during the bloodline connection/disconnection while absorbing shocks and reducing needle movement in patient

COLOR-CODED OCCLUSION CLAMP AND LUER

Eases the distinction between arterial and venous needles

TAPERED LUER

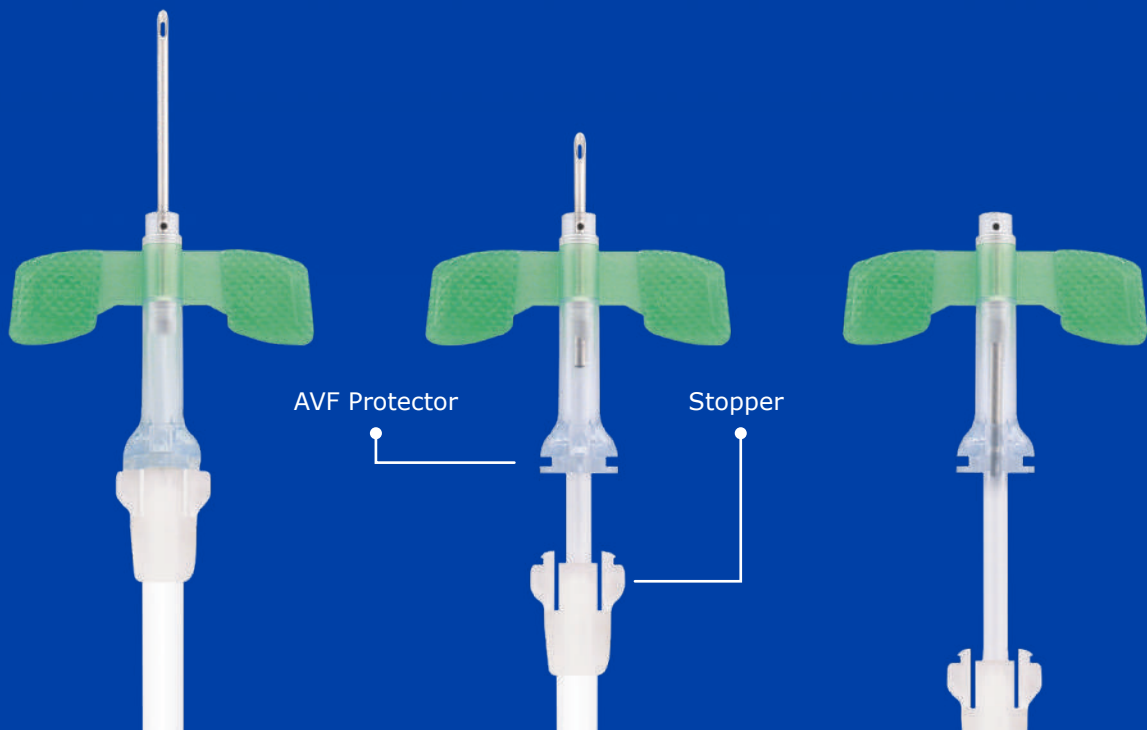
Warrants a safe and easy connection/disconnection



SPECIFICATIONS

Arterial Needle*	Venous Needle*	Size (Gauge)	Needle Length (mm)	Tube Length (mm)	Color
AVSF1420-HTC-15RGT	AVSF1420-TC-15B-GT	14	20	150	Purple
AVSF1425-HTC-15RGT	AVSF1425-TC-15B-GT	14	25	150	Purple
AVSF1432-HTC-15RGT	AVSF1432-TC-15B-GT	14	32	150	Purple
AVSF1420-HTC-30RGT	AVSF1420-TC-30B-GT	14	20	300	Purple
AVSF1425-HTC-30RGT	AVSF1425-TC-30B-GT	14	25	300	Purple
AVSF1432-HTC-30RGT	AVSF1432-TC-30B-GT	14	32	300	Purple
AVSF1520-HTC-15RGT	AVSF1520-TC-15B-GT	15	20	150	Yellow
AVSF1525-HTC-15RGT	AVSF1525-TC-15B-GT	15	25	150	Yellow
AVSF1532-HTC-15RGT	AVSF1532-TC-15B-GT	15	32	150	Yellow
AVSF1520-HTC-30RGT	AVSF1520-TC-30B-GT	15	20	300	Yellow
AVSF1525-HTC-30RGT	AVSF1525-TC-30B-GT	15	25	300	Yellow
AVSF1532-HTC-30RGT	AVSF1532-TC-30B-GT	15	32	300	Yellow
AVSF1620-HTC-15RGT	AVSF1620-TC-15B-GT	16	20	150	Green
AVSF1625-HTC-15RGT	AVSF1625-TC-15B-GT	16	25	150	Green
AVSF1632-HTC-15RGT	AVSF1632-TC-15B-GT	16	32	150	Green
AVSF1620-HTC-30RGT	AVSF1620-TC-30B-GT	16	20	300	Green
AVSF1625-HTC-30RGT	AVSF1625-TC-30B-GT	16	25	300	Green
AVSF1632-HTC-30RGT	AVSF1632-TC-30B-GT	16	32	300	Green
AVSF1720-HTC-15RGT	AVSF1720-TC-15B-GT	17	20	150	Orange
AVSF1725-HTC-15RGT	AVSF1725-TC-15B-GT	17	25	150	Orange
AVSF1732-HTC-15RGT	AVSF1732-TC-15B-GT	17	32	150	Orange
AVSF1720-HTC-30RGT	AVSF1720-TC-30B-GT	17	20	300	Orange
AVSF1725-HTC-30RGT	AVSF1725-TC-30B-GT	17	25	300	Orange
AVSF1732-HTC-30RGT	AVSF1732-TC-30B-GT	17	32	300	Orange

* Needles with turnable wings. Arterial and venous needles are also available with fixed wings instead of turnable wings. Please contact your local office for other specifications, order quantities, and availability.



NIPRO CORPORATION (Headquarters)

3-9-3, Honjo-Nishi, Kita-ku, Osaka,
531-8510, Japan
Tel: +81 6 6372 2331 Fax: +81 6 6371 7422
<https://www.nipro.com.jp/en/>

NIPRO ASIA PTE LTD

8 Temasek Boulevard
#40-02 Suntec Tower Three
Singapore 038988
Tel: +65 6588 2281 Fax: +65 6588 2481
Email: niproasia@nipro.com.sg
<http://www.niproasia.com.sg/>

NIPRO MALAYSIA SDN. BHD

B-3-2 The Ascent Paradigm,
No.1 Jalan SS7/26A, Kelana Jaya,
47301 Petaling Jaya, Selangor, Malaysia
Tel: +603 7622 1190/1191/1192
Fax: +603 7622 180
Email: office@nipro.com.my

NIPRO JMI MEDICAL LTD

Unique Heights, Level 11,
117, Kazi Nazrul Islam Avenue, Ramna,
Dhaka-1217, Bangladesh
Tel: +880 2 55138723 Fax: +880 2 55138725
Email: info@jmigroup-bd.com

NIPRO AUSTRALIA PTY LTD

Suite 2. 02, 657 Pacific Highway,
St. Leonards, NSW 2065, Australia
Tel: +61 2 9437 9000 Fax: + 61 2 9437 0860
Email: support@niproaustralia.com.au
<http://www.niproaustralia.com.au/>

NIPRO MEDICAL PVT LTD

24-CCA, DHA Phase 8, (Ex Park View),
Lahore-54792, Pakistan
Tel: +92 4237175802/4237175803 Fax: +92 4237175804
Email: info@nipromedical.com.pk

NIPRO SALES (THAILAND) CO., LTD.

89/170 Nipro Building, Viphavadee-Rangsit Road,
Talad-Bangkhen, Laksi, Bangkok, THAILAND 10210
Tel : +66 2551 2000 Fax : +66 2551 2006
Email : sales@niprosales.com

NIPRO SALES VIETNAM COMPANY LIMITED

Floor 15, Unit 15.06 & 15.07, Viettel Complex Building 285
Cach Mang Thang 8, Ward 12, District 10,
Ho Chi Minh city, Vietnam
Tel : +84 908 260 405
Email : nhuy@niprosales.com

**NIPRO SALES (THAILAND) CO., LTD. -
MYANMAR REPRESENTATIVE OFFICE**

No. E 302, Manawhary Housing, Baho Road, Ahlone
Township,
Yangon, Myanmar
Tel : +66 2551 2000 Fax : +66 2551 2006
Email : win@niprosales.com